

# CityCare Green Plan 2025

Our Journey to Net Zero



Our values: Kindness | Respect | Trust | Honesty



## **‘Climate change is the greatest global health threat facing the world in the 21st century, but it is also the greatest opportunity to redefine the social and environmental determinants of health’ – Lancet Report**

Climate change is the long-term shift in the Earth's average temperatures and weather conditions, causing polar ice caps to melt, the sea levels to rise and in some areas, extreme weather events and rainfall are becoming more common while others are experiencing more extreme heat waves and droughts.

These often affect things that we depend upon like water, energy, transportation, wildlife, and human health which in turn increases the demand on healthcare services.

With this in mind CityCare have developed a Green Plan to reduce our impact on the environment and ensure the delivery of sustainable community health services whilst aligning with the green plans of NHS England and other system partners.

The climate emergency is a health emergency. Climate change threatens the foundations of good health, with direct and immediate consequences for our patients, the public and the NHS. The situation is getting worse, with nine out of the ten hottest years on record occurring in the last decade and almost 900 people killed by heatwaves in England in 2019.

Without action there will be hotter and wetter conditions in the UK, increases in the frequency and intensity of extreme weather events like heatwaves and flooding, and increased spread of infectious diseases.

These impacts will have negative consequences for human health and wellbeing, and ultimately the delivery of healthcare services.

In October 2020, the Greener NHS National Programme published its new strategy, ‘Delivering a Net Zero National Health Service’. This concluded that left unabated, climate change will disrupt care, with poor environmental health contributing to major diseases, including cardiac related illness, asthma and cancer. The strategy details the actions necessary for the entire NHS to reach Net Zero carbon emissions by 2040 for the emissions it controls (NHS Carbon Footprint), and 2045 for those it can influence such as those embedded within the supply chain (NHS Carbon Footprint Plus).

As a non-NHS organisation CityCare are not required to achieve the net zero targets set out by the NHS but recognise our impact on the environment and our responsibility towards reducing our carbon emissions.



Nottingham CityCare Partnership (CityCare) is committed to delivering sustainable healthcare services while minimising our environmental impact. Our approach to environmental management is guided by our Climate Action Group Plan and our commitment to achieving Net Zero carbon emissions by 2040, in line with NHS England's target.

We recognise the importance of preventing pollution, protecting the environment, and adhering to UK legislation and best practice guidance within the health and care sector. Our policy places a responsibility on all staff to consider environmental, social, and economic issues when making decisions, both short and long term.

CityCare will collaborate closely with regulatory authorities, Integrated Care System (ICS) partners, staff, patients, service users, volunteers, carers, suppliers, and contractors to ensure it minimises the environmental impact of providing healthcare services. CityCare accepts that its operational activity will inevitably result in adverse effects on the environment but also recognises that opportunities exist to have a positive impact through the implementation of innovative solutions or services or adopting simple measures on a large scale which will reduce demand on resources.

The ongoing development of the CityCare Environmental Policy and Green Plan will concentrate on key areas of action below:

**Our Energy** – Transition to low/zero carbon solutions for the provision of energy services, with actions areas concentrating on reducing consumption, eliminate fossil fuels.

**Our Waste** – We have lean and efficient services where waste is managed to minimise environmental harm, prioritising prevention, with actions to reduce waste, promote reuse and increased recycling.

**Our Travel** - Improved local air quality and reduced carbon emissions from travelling sustainably, through encouraging sustainable travel and fleet electrification.

**Our People** - Informed and engaged staff, patients, volunteers, and carers who are empowered to deliver and receive sustainable healthcare. Achieved through education and training, engagement in sustainable initiatives and embedding sustainability across the organisation and within processes.

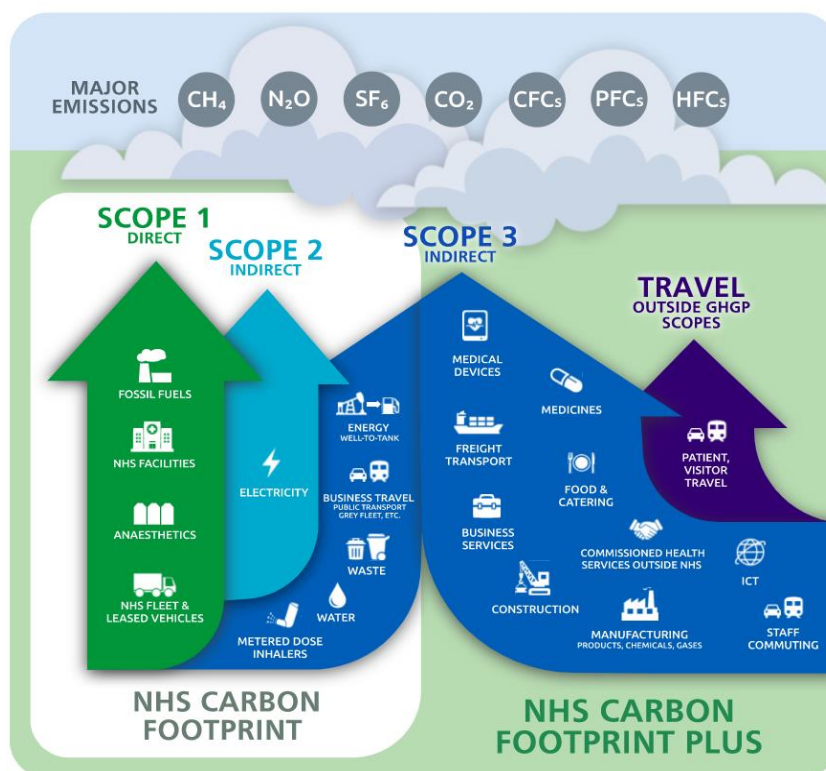
**Our Water** - Reduce unnecessary water usage and use water efficiently, through the introduction of reduce water and reduce wastewater initiatives.

**Our Supply Chain** - Partnership working to improve efficiency and eliminate carbon, through better understanding and influence around sustainable purchasing e.g. single use plastic and collaborating with partners and suppliers to identify efficiencies and reduce carbon.

**Our Care** – Offer patient focused, low carbon care with moving towards Technology enabled smarter working, digitising our health and care records and public facing digital services.

**Our Climate** - A resilient and robust service provision which responds to a changing climate, through performing a climate change risk assessment and developing and implementing a climate adaptation plan.





Source: [Delivering a Net Zero NHS](#)

**Scope 1:** Direct emissions from owned or directly controlled sources, on site

**Scope 2:** Indirect emissions from the generation of purchased energy, mostly electricity

**Scope 3:** All other indirect emissions that occur in producing and transporting goods and services, including the full supply chain.

Plus emissions related to patient and visitor travel

Our Green Plan clearly outlines the steps we have already taken, actions that are in progress and future plans that will allow us to reach the carbon neutral targets.

2023/24					
Scope 1 Net Zero by 2040 (tCO <sub>2</sub> e)		Scope 2 (tCO <sub>2</sub> e)		Scope 3 Net Zero by 2045 (tCO <sub>2</sub> e)	
Fuel for Fleet	2.36	Electricity	42.39	Water	0.05
		Gas	21.19	CityCare Miles travelled	331.68
				UK Electricity for T&D for EV	0.17
				Plug in - Hybrid Cars	15.70
				UK Electricity for Plug-In Hybrid	3.40
				Electric Vehicles	2.05
				Water	0.01
				Water Treatment	0.02
				Home Working	35.04
<b>Total Scope 1</b>	<b>2.36</b>	<b>Total Scope 2</b>	<b>63.58</b>	<b>Total Scope 3</b>	<b>388.12</b>
<b>Total: 454.06 tCO<sub>2</sub>e</b>					

\*Calculations based on the 23/24 CityCare Energy & Carbon Report.



## Energy and Carbon Report for 2023/24

- During the financial year CityCare consumed approximately 454 tonnes of CO2 due to travel and energy compared with 447 tonnes of CO2 in 2022/23.
- This is a small increase of 1.56% from 2022/23 and is a result of an increase in staff numbers in the year.
- Business miles still account for the majority of CO2 consumed by CityCare - 78% of the overall total.
- There has been an increase in the number of hybrid and electric cars being used from 12 in 2022/23 to 56 in 2023/24.
- Using the intensity ratio of FTE this equates to 0.46 tonnes of CO2 per FTE in 2023/24 compared to 0.47 tonnes of CO2 per FTE in 2022/23.
- CityCare remains committed in working to reduce the impact its activities and waste have on the environment.
- Some services are still being delivered virtually thus reducing the need for additional business miles.
- CityCare has purchased an electric van which was delivered in May 2024 and has adopted a new car lease scheme where all of the cars leased
- will be hybrid or fully electric with CO2 emissions not greater than 125mg/km.

## Our System Partners

Our system partners have all pledged an ambition to be at Net Zero by 2040.

**Sherwood Forest Hospitals** have developed a Trust-wide Green Plan and have a climate Action Project Group.

**Nottinghamshire Healthcare NHS Foundation Trust** have a Green Plan and are working hard to reduce emissions strategically through their Sustainable Development Management plan.

**Nottingham University Hospitals NHS Trust** also developed a Green Plan for 2022 -2025 and in line with the ambition to deliver a net zero NHS they are going through transformational processes to seeking to address the new challenges.

**East Midlands Ambulance Service NHS Trust** have a green plan that outlines the actions they will take to tackle their carbon footprint, adoption electric vehicle and infrastructure so that their fleet emissions are mostly avoidable. They are also revising business travel policies.

**Doncaster and Bassetlaw Teaching Hospitals Trust** have a green plan stating their commitment and approach to achieving net zero.

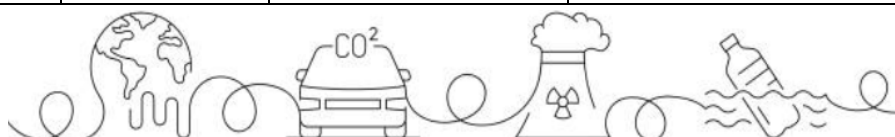
In March 2020 **Nottingham City Council** made a commitment to become the first city in the UK to be carbon neutral by 2028.

[CN28 - Carbon Neutral Nottingham Homepage](#)



## Our Progress So Far

Action	Action Required	Action Taken/Required	Lead	By When	
Our Energy Supplier	Ensure utilising Green Energy		Procurement Team	Apr 2024	Complete
10% Social Value Weightings in place for all tenders	Procurement Policy Updated	Procurement Policy updated and Atamis system used for tenders	Procurement Team	April 2024	Complete
Company Fleet	Purchase electric vehicle	Vehicle purchased	Procurement Team	May 2024	Complete
Recycled Paper	Ensure all sites only use recycled paper	Non-recycled paper to be masked on NHS Supply chain so it cannot be ordered	Procurement Team	Apr 2022	Complete
Salary sacrifice scheme	Move to new Salary Sacrifice Scheme	Moved to new scheme in place that offers ULEVs/ZEVs	Finance/HR/Procurement Team	Apr 2024	Complete
Reducing Stock Consumption/Demand	Stock Awareness	Communications set to staff re: Stock Management Best Practice	Procurement Team	Apr 2024	Complete
Solar Panels	Solar panels to be installed on the roof of Aspect House.	Solar panels in place. Estates to monitor contribution to energy costs.	Estates	Dec 2024	Complete
Cycle to work staff benefit scheme	Promote Cycle to Work Scheme	Advertise that staff can save up to 37% on a new bike on the scheme.	HR/Communications Team	Jun 2024	Complete
Reuse/Disposal of Medical Equipment	Ensure medical equipment is disposed of responsibly.	Equipment is disposed of in accordance with relevant regulations or sold through auction company.	Procurement Team	Sep 2024	Complete
Recycle Office Furniture	Create Surplus Equipment Catalogue	Catalogue created and shared in weekly staff newsletter.	Estates	Jan 2025	Complete
Reducing Consumption/Demand of medical consumables (wound care products)	Roll out the NHS Supply Chain (NHSSC) Electronic Demand Capture (eDC)	eDC in place at key sites to ensure lowest levels of stock holding/reordering or consumables	Procurement Team	April 2025	Complete
Recycling	Ensure consistency across all sites.	Dry mixed recycling, general, food and clinical waste in place at all sites. Posters to inform staff of the waste streams in place.	Estates	April 25	Complete





## What we're working on

**Carbon Reduction Measures** – focus on activities to achieve emission reduction rates including transport, the built environment, energy generation, waste and water and consumption.

**Carbon Removal** – focus on capturing carbon and offsetting residual greenhouse gas emissions that cannot be removed entirely. These are broken down into three groups: local carbon sequestration, carbon capture and carbon offsetting.

Action	Action Required	Action Taken/Required	Lead	By When
<b>Carbon Reduction Measures - Energy</b>				
Focus on key activities to reduce energy use	Encourage behavioral changes among staff to minimize energy use, such as turning off lights and equipment when not in use.	Promote through CASCADE and on the CAG intranet page.	Climate Action Team	September 2025
Ongoing review of energy contracts to ensure renewable energy providers	Monitor contracts and review providers with environmental impact when contracts are renewed.		Procurement Team	Ongoing
<b>Carbon Reduction Measures - Energy</b>				
Focus on key activities to reduce Waste	Implement measures to increase recycling and minimize waste generation, ensuring proper segregation and disposal processes are in place. Enhance staff awareness and engagement in recycling initiatives through regular updates.	Circulate quarterly reminders of waste streams including segregation of recycling, general, food and clinical waste and add to CAG intranet page.	Estates/CAG	March 2026
<b>Carbon Reduction Measures - Travel</b>				
Review/Create Business Travel Policy **NHS organisations have until the end of 2026 to have a sustainable travel plan in place.	Review/create a Business Travel policy to raise awareness and consideration of the impact of avoidable business travel		HR	October 2025
Reduce travel by car	Complete a staff travel survey to collect data about staff commute. Update the intranet page with sustainable travel options available		HR/CAG	March 2026
Share EV Charging point map on staff intranet. <a href="#">Map of electric charging points for</a>	Develop intranet page for Climate Action Group.		CityCare Climate Action Group	October 2025



<a href="#">electric cars UK:</a> <a href="#">Zapmap</a>				
<b>Carbon Reduction Measures - People</b>				
Employ Local	Employ more people from our local community.		HR	TBC
Net zero training	For all staff to undertake Net Zero training, including Board Level Staff	Facilitate access to net zero training for all staff to ensure comprehensive understanding and commitment to our environmental goals.	Workforce	March 2026
Implement an Environmental intranet page	Create a dedicated section on the intranet to highlight the importance of reducing carbon emissions and to raise awareness about climate change.		Climate Action Team	September 2025
Green Champions at each CityCare site to support fostering a culture of environmental responsibility, inspire our staff to actively participate in sustainability initiatives and contribute to our overarching goal of achieving net zero emissions	Develop a role description for Green Champions and promote the role with the aim of having a minimum of one Green Champion at each CityCare site.		Climate Action Team	October 2025
Rationalisation of our Estate Ensuring optimal utilisation of space and resources, while supporting the development of a hybrid working policy.	Initiate a program to review our estate.		Head of Facilities and Support Services	November 2025
Hybrid working policy	To devise and implement a hybrid working policy		People Team	November 2025
<b>Carbon Reduction Measures - Water</b>				
Focus on key activities to achieve reduction in water consumption	Benchmark current water consumption and identify actions to reduce consumption.	Promote through CASCADE and on the CAG intranet page.	CAG	September 2025
<b>Carbon Reduction Measures – Supply Chain</b>				
Supply Chain Management	Initially identify Top 20 Suppliers with highest carbon emissions to get details on their Carbon reduction / Net Zero plans	Are measures already in place placing their emissions below the national average?	Procurement Team	October 2025





Single Use Plastics	Reduce no. of single use plastic items used.	Identify single use plastic products and source alternatives.	Procurement Team.	April 2026
Buy Local	Updating Procurement Documents to encourage 'buying local'.	Documents available (including New Supplier Form Update) and communicated.	Procurement Team	September 2025
Review of PPE and medical equipment	Raise awareness of when PPE use is required and explore options for sustainable medical equipment options		Infection Prevention and Control and Procurement Team	October 2025
Review of disposable curtains in clinic room	To identify whether alternatives can be provided/increase the replacement time for replacing disposable curtains		Infection Prevention and Control and Procurement Team	September 2025

#### Carbon Reduction Measures – Our Care

Digital Solutions	Explore use of digital solutions to organise visit schedules according to the most efficient route taking post codes, staff skill sets to reduce unnecessary journeys.		Digital / Transformation Team	TBC
	Explore use of digital solutions to reduce need to letters being posted to patients.		Digital / Transformation Team	TBC
	Encourage use of Video Interpreting rather than face to face.	Promote the Service via Cascade and the CAG intranet page.	Head of Facilities and Support Services	August 2025
Review delivery of patient care relating to environment	Identify initiatives emphasizing the role of digital strategies to reduce environmental impacts. This includes efforts to increase the use of video interpreting to reduce travel		Business and Data and Digital Teams	March 2026

#### Carbon Reduction Measures – Our Climate

Create process for monitoring CO2 emissions, and report on quarterly.	Identify a tool to calculate emissions	Calculate emissions and share results quarterly including on the Intranet showing progress against the target	CityCare's Climate Action Group	August 2025
Refresh draft Green Plan Annually			Climate Action Group/Business Development Group	May 2026 and annually thereafter
Share the Environmental Policy	Make the policy available on the POD		Business Development Team	June 2025



	and highlight in Cascade			
Carbon Removal				
Focus on capturing carbon and offsetting residual greenhouse gas emissions	Identify ways to offset carbon emissions.	CityCare Climate Action Group to explore off setting emissions by working with local charities i.e. Nottz Garden Project	CityCare Climate Action Group	December 2025



Our values: Kindness | Respect | Trust | Honesty

